

**STIEBEL ELTRON**



**LWZ 130**

Healthy indoor air

LWZ 130

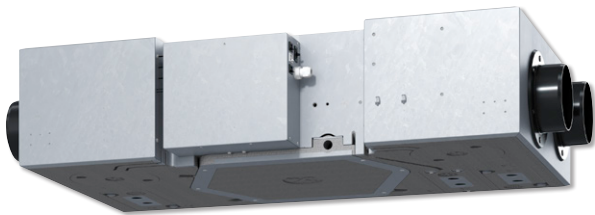
HEAT RECOVERY VENTILATION

Healthy indoor air

Achieve a healthy home with ventilation from STIEBEL ELTRON. Air filters installed inside the heat recovery ventilation unit will remove any pollen from the supplied outside air, creating an ideal environment for asthma and allergy sufferers. The cross-flow heat exchanger will capture heat energy from the extracted exhaust air and use it to heat the fresh incoming air.

Product features

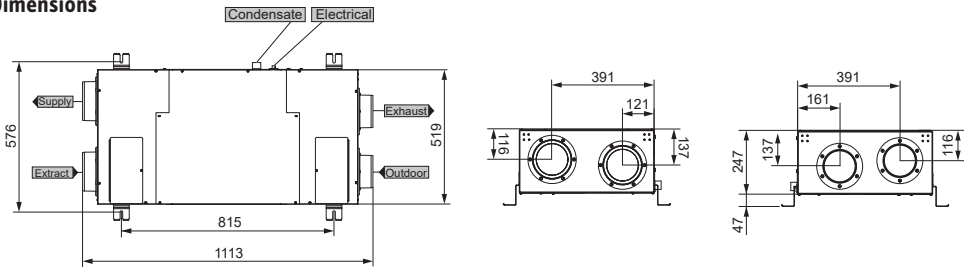
- › Replaces indoor air with filtered fresh air
- › from outside, ideal for asthma and allergy sufferers
- › Compact and discrete roof installation
- › Energy efficient with up to 87% heat recovery
- › Designed for air flow rates of 50 – 180 m3/h
- › Quiet operation



Wall-mounted Controller



Dimensions



Type		LWZ 130 Trend	
Article no.		237805	
Heat recovery		Up to 87 %	
Connection		1/N/PE ~ 230 V / 50 Hz	
Max. current (230V)		A	0.46   5
Power consumption		W	105
Air flow rate		m³/h	50 – 180
IP rating		IP20	
Externally available max. static pressure differential		Pa	160 (at 180 m3/h)
Application range		°C	0 – 45
Filter class		G4 & M5 (F7 Optional)	
Air duct connection		mm	125
Condensate connection		mm	20
Sound power level (EN 12102)		dB(A)	33
Height		mm	248
Width		mm	520
Depth		mm	1113
Weight		kg	18

STIEBEL ELTRON is committed to our policy of continual improvement, some features may have subsequently been changed or even removed. Our advisors will be happy to consult with you regarding the currently applicable equipment features. The images used in this data sheet are for reference only.